



2020 ANNUAL REPORT

We Feed, We Clothe, We Uplift, We Love

Mission Statement

Recognizing the human dignity of all persons, Open Door Outreach Center's primary mission, in the spirit of interfaith charity, is to provide emergency services, food, clothing, and referral information to families in need.

Open Door may offer, as funding permits, other special assistance programs and supplemental services meant to improve the quality of the life in the community.

Open Door Outreach Center

7170 Cooley Lake Road
Waterford, Michigan 48327
(248) 360-2930
(248) 360-4975 (fax)

Resale Store

7140 Cooley Lake Road
Waterford, Michigan 48327
(248) 360-4977

jreardon@opendooroutreachcenter.com
opendooroutreachcenter.com

Open Door Outreach Center was established in 1980. We are a 501(c)(3) tax-exempt organization, licensed by the State of Michigan to solicit donations from the public to support its programs, #MISC7533.

CLIENT PROFILE

PERCENTAGE OF FAMILY UNITS SERVICED

Single Parent	18%
2 Adults with children	15%
Person Alone	33%
Senior Citizen	12%
Another kind of family	22%

CLIENTS SERVED

Forty-nine percent of the people we fed in 2020 were children and seniors. Seventy-three percent of those served were extremely low income.

Clients / Community	Families Served	Pounds of Food	%	Crisis Funds
Waterford	2,133	177,649	61%	\$13,030
White Lake	608	51,171	17%	\$7,117
W. Bloomfield	297	26,333	9%	\$200
Commerce	125	10,295	4%	\$0
Other	116	9,289	3%	\$3,701
Walled Lake	85	7,333	2%	\$263
Wixom	71	6,902	2%	\$3,133
Keego Harbor	61	4,753	2%	\$171
Total	3,496	293,725	100%	\$27,615

FOOD PANTRY PROGRAM

Our mission is to provide food to families in need. In 2020 we assisted 3,072 families, distributing 293,725 pounds of food, which equates to 244,771 meals.

This benefited 7,164 individuals including 2,105 children. A significant portion of this food is from our community partners as well as Costco, Forgotten Harvest, Waterford Panera Bread, Meijer Simply Give, White Lake Community Garden, Waterford Insurance, Gleaners Food Bank, and Einstein Bagels.

TOTAL VALUE: \$505,207

HOLIDAY MEAL PROGRAMS

Unfortunately, because of the COVID-19 pandemic we cancelled our Easter meal distribution. By Thanksgiving, we modified our program providing 170 families with a pie and a Meijer gift card to purchase holiday food for the family. At Christmas we served 106 families in the same manner.

TOTAL VALUE: \$6,282

2020 CHILD SUMMER FOOD PROGRAM

We distributed additional food in June - August 2020. Summer is a difficult time for very low income families. Client families with children in the household received extra bags filled with child-friendly breakfast and lunch items at each of their monthly pantry visits. Ninety-one families with 165 children received 4,448 pounds of food or 3,844 meals to eat while school was out.

TOTAL VALUE: \$7,651

BACK TO SCHOOL PROGRAM

New backpacks filled with grade appropriate school supplies, a Kohl's gift card and a Resale Store gift certificate were provided to 60 children, grades K-12. Throughout September and October, our families used vouchers in the Resale Store to purchase clothing for their children.

TOTAL VALUE: \$8,512

ADOPT A FAMILY CHRISTMAS/HOLIDAY-PROGRAM

Families, churches and businesses participated in our Adopt-A-Family Program, providing gifts to 75 families with 259 family members, including 121 children & 16 seniors! Thank you for helping put smiles on many children's faces this past Christmas!

TOTAL VALUE: \$29,920

CLOTHING & HOUSEHOLD VOUCHERS PROGRAM

Our Resale Store, open to the public, is supported by items donated from our generous community. Clothing and household items valued at \$26,784 were given to 506 households at no cost. These items help clothe the family and provide household items to furnish a home. Client Services distributed to 231 people socks, books, PJ's, scarves, mittens, winter coats, hats etc. valued at \$5,644.

TOTAL VALUE: \$32,428

CRISIS FUNDING PROGRAM

Open Door provides life changing emergency funds to prevent evictions, utility shut-offs, fuel only gas cards, car repairs, medical needs, furniture, etc. Last year 164 families were helped with \$27,615 in funds/support. In addition to funds provided directly by Open Door, we collaborated with many partners in securing additional funding to prevent crisis for families.

TOTAL VALUE: \$28,939

THANK YOU TO OUR COMMUNITY PARTNERS

We express our deepest gratitude to our private donors, foundations, partner churches, local businesses, service organizations, area schools, and our community for their continued generosity with pantry donations, resale store donations and financial support. This critical work is accomplished because of your donations and support! Together we feed, we clothe, we uplift & we love. Thank you for making a tremendous difference!

RESPONSE TO COVID-19

Despite the initial uncertainties and challenges associated with the pandemic, Open Door was able to remain open to serve our clients. We implemented a drive thru pantry to ensure safety of our clients, volunteers and staff. The government stimulus and increased food assistance benefits has resulted in a temporary reduction in clients, however Open Door increased the food allowance to each client.

BUILD-OUT

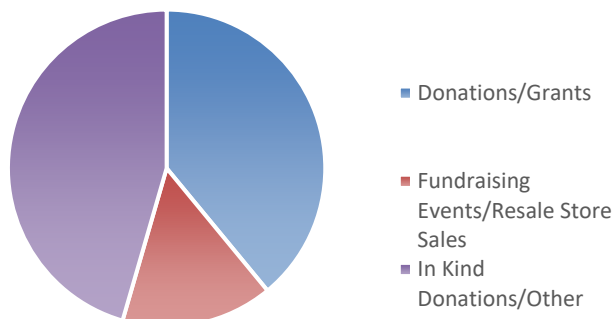
In early 2020 the Board of Trustee took bold action by purchasing property adjacent to the resale store. Remodeling began with most of the licensed contractors providing reduced rates and the St. Patrick's Knights of Columbus providing extensive interior work.

Our special thanks to both; especially to the Knights of Columbus who volunteered hundreds of hours of their time, talents and labor.

The added space will expand the pantry and resale store for us to improve services to our clients. This expansion will be followed with the remodeling of the administration building to establish an education center. Open Door will be poised to initiate classes for clients on household budgeting, application and resume completion, basic computer skills etc. and will expand our services in helping clients obtain their independence.

2020 FINANCIAL SUMMARY

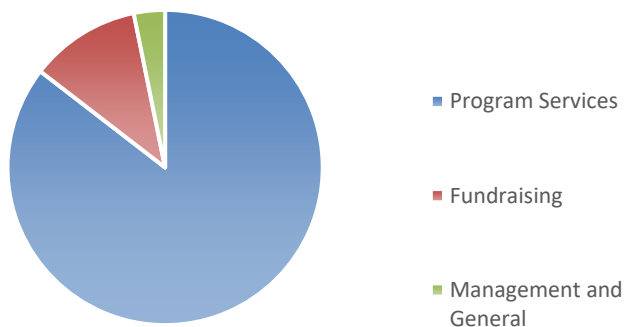
REVENUE



2020 REVENUE

Donations/Grants	\$	473,671	39%
Fundraising Events/Resale	\$	214,940	18%
In Kind Donations/Other	\$	525,203	43%

FUNCTIONAL EXPENSES



2020 FUNCTIONAL EXPENSES

Program Services	\$	803,887	86%
Fundraising Events	\$	105,778	11%
Management and General	\$	29,822	3%

CURRENT BOARD OF DIRECTORS

Sylvia Ashton	President
Robert Wright	Treasurer
Bethanie Mansfield	Secretary
Eric Andrzejak	Director
Gene Gerard	Director
JoAnn Bolek	Director
Mary Seifert	Director
Karen Politowicz	Director

2021 STAFF

John Reardon	Interim Executive Director
Tina Davis	Client Services Coordinator
Patricia Race	Resale Store Manager
Tillie Coffey-Raymond	Resale Store Asst. Mgr.
Stephanie Mercier	Pantry Manager
Jon McGregor	Projects Manager